



# Rab 20 Polyclonal Antibody

<b>Catalog No</b>	YP-Ab-16190
<b>Isotype</b>	IgG
<b>Reactivity</b>	Human;Rat;Mouse;
<b>Applications</b>	WB;IHC;IF;ELISA
<b>Gene Name</b>	RAB20
<b>Protein Name</b>	Ras-related protein Rab-20
<b>Immunogen</b>	The antiserum was produced against synthesized peptide derived from human RAB20. AA range:115-164
<b>Specificity</b>	Rab 20 Polyclonal Antibody detects endogenous levels of Rab 20 protein.
<b>Formulation</b>	Liquid in PBS containing 50% glycerol, 0.5% BSA and 0.02% sodium azide.
<b>Source</b>	Polyclonal, Rabbit,IgG
<b>Purification</b>	The antibody was affinity-purified from rabbit antiserum by affinity-chromatography using epitope-specific immunogen.
<b>Dilution</b>	WB: 1/500 - 1/2000. IHC: 1/100 - 1/300. ELISA: 1/10000.. IF 1:50-200
<b>Concentration</b>	1 mg/ml
<b>Purity</b>	≥90%
<b>Storage Stability</b>	-20°C/1 year
<b>Synonyms</b>	RAB20; Ras-related protein Rab-20
<b>Observed Band</b>	28kD
<b>Cell Pathway</b>	Golgi apparatus . Cytoplasmic vesicle, phagosome . Cytoplasmic vesicle, phagosome membrane ; Lipid-anchor ; Cytoplasmic side . Highly enriched on apical endocytic structures in polarized epithelial cells of kidney proximal tubules (By similarity). Recruited to phagosomes containing S.aureus or M.tuberculosis (PubMed:21255211). .
<b>Tissue Specificity</b>	Low or absent expression in normal pancreas and stronger expression in 15 of 18 exocrine pancreatic adenocarcinomas (at protein level).
<b>Function</b>	function:Plays a role in apical endocytosis/recycling.,similarity:Belongs to the small GTPase superfamily. Rab family.,subcellular location:Highly enriched on apical endocytic structures in polarized epithelial cells of kidney proximal tubules.,tissue specificity:Low or absent expression in normal pancreas and stronger expression in 15 of 18 exocrine pancreatic adenocarcinomas (at protein level).
<b>Background</b>	function:Plays a role in apical endocytosis/recycling.,similarity:Belongs to the small GTPase superfamily. Rab family.,subcellular location:Highly enriched on apical endocytic structures in polarized epithelial cells of kidney proximal tubules.,tissue specificity:Low or absent expression in normal pancreas and stronger expression in 15 of 18 exocrine pancreatic adenocarcinomas (at protein



level).,

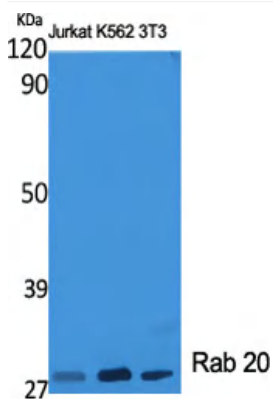
**matters needing attention**

Avoid repeated freezing and thawing!

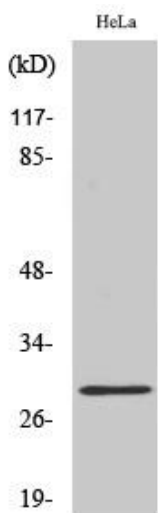
**Usage suggestions**

This product can be used in immunological reaction related experiments. For more information, please consult technical personnel.

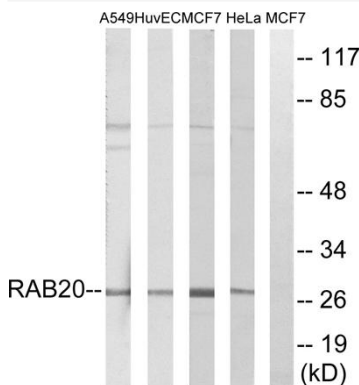
**Products Images**



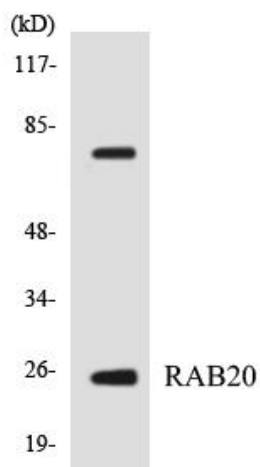
Western Blot analysis of various cells using Rab 20 Polyclonal Antibody diluted at 1:2000



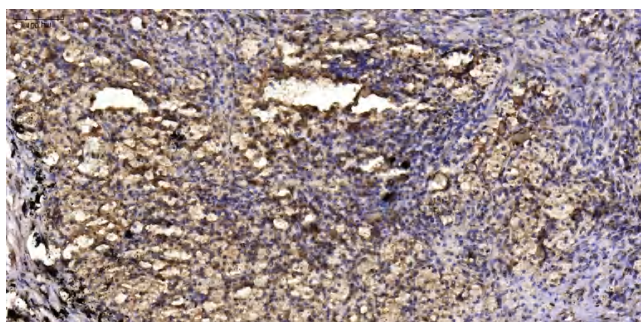
Western Blot analysis of A549 cells using Rab 20 Polyclonal Antibody diluted at 1:2000



Western blot analysis of lysates from HeLa, MCF-7, HUVEC, and A549 cells, using RAB20 Antibody. The lane on the right is blocked with the synthesized peptide.



Western blot analysis of the lysates from HeLa cells using RAB20 antibody.



Immunohistochemical analysis of paraffin-embedded human Squamous cell carcinoma of lung. 1, Antibody was diluted at 1:200(4° overnight). 2, Tris-EDTA,pH9.0 was used for antigen retrieval. 3,Secondary antibody was diluted at 1:200(room temperature, 45min).